



ESCON INDUSTRIES

ESCON Industries specializes in Robotics, Automotive-Fixtures, Gauges, EV, General Engineering & Medical.



+91-9319808254



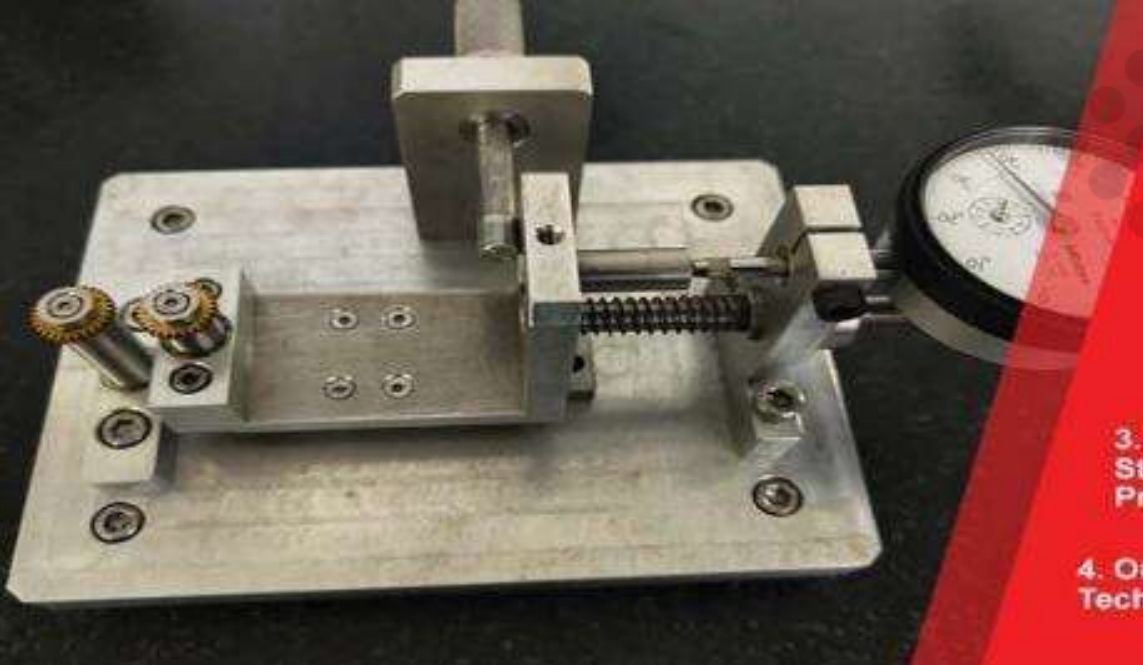
escon.ind@gmail.com



www.esconindustries.in



357, Udyog Vihar, Phase VI,
Sector -37, Gurgaon- 122001



KEY TO SUCCESS IN PRECISION MANUFACTURING

1. Success in the Engineering and Manufacturing Industry Relies on Precision, Durability, and Efficiency-and that's Exactly What These Components Deliver.
2. From CNC Parts and Fixture Tools Ensuring Accurate Machining, to Copper Electrodes and Forging Dies Enabling Advanced Shaping, and Hydraulic Systems Powering Modern Machinery-each Element Plays a Critical Role in Maintaining high-quality production standards.
3. The use of Profile Gauges and Projectors Ensures Tight Quality Control, While Stainless Steel Parts and Curling Seaming Rollers Support Strong, Lasting Products across Various Sectors.
4. Our Success is Built on using the Right Tools, the Right Materials, and the Right Technology-at the Right Time.

INTRODUCTION

ESCON Industries was established in 2009, CEO Mr. Balendra Singh is BE Mechanical and having rich working experience with different type of Well known industries like Greaves Cotton, RicoAuto Industry and SONA group.

ESCON Industries is engaged in manufacturing of various type of products like CNC turned parts, VMC machined parts, Proto parts, Dies, Tools, Customized parts by reverse engineering, Rollers, SPM, testing rigs, Jigs, fixtures, Receiving Gauges, Automation, CMM Services, Material handling trolley, Pneumatic tools parts & fabrication work, Tool room jobs etc.



**ESCON
ROBOTIC**



**ESCON
EV**



**ESCON
AUTOMOTIVE-
FIXTURES &
GAUGES**



**ESCON
GENERAL
ENGINEERING**



**ESCON
MEDICAL**



OUR BEST ESCON MACHINING SERVICES

ESCON Industries specializes in Robotics, Automotive-Fixtures, Gauges, EV, General Engineering & Medical.

1. Robotics
2. Automotive-Fixtures & Gauges
3. EV
4. General Engineering
5. Medical



MATERIALS WE WORK WITH

1. CNC Turned Parts
2. VMC Machined Parts
3. Customized Parts by Reverse Engineering
4. Die & Mould, Proto Parts
5. Rollers, Seaming Rollers, Electrodes
6. Curling Rollers, Cess Rollers, Core Pins etc.
7. Jigs & All type of Fixtures
8. Receiving Gauges
9. Standard Gauges



From CEO's Desk



I am delighted to extend a warm welcome to you. As we set our sights on the future, it is imperative that we maintain a steadfast dedication to achieving our goals. Let us continue to collaborate and strive for success, unified in our efforts towards excellence.





Our Vision

To be the most trusted manufacturing partner by consistently exceeding customer expectations through quality, technology, and dedication.





OUR PRODUCTS

- ❖ CNC Turned Parts, Job work and with material
- ❖ VMC Machined parts
- ❖ Customized parts by Reverse Engineering
- ❖ Die & Mould, Proto Parts, Hydraulic Parts, EV Parts
- ❖ Rollers, Seaming Rollers, Electrodes
- ❖ Curling Rollers, Cess Rollers, Core Pins, Neel etc.
- ❖ Jigs & All type of Fixtures, Robotic Parts
- ❖ Receiving Gauges
- ❖ Standard Gauges
- ❖ Special Purpose Machine (SPM) & Automation
- ❖ Dies & Other tool room type work
- ❖ All type of Fabrication works





Our Milestones



2014- ESCON Auto Established



2012- ISO 9001 Certification

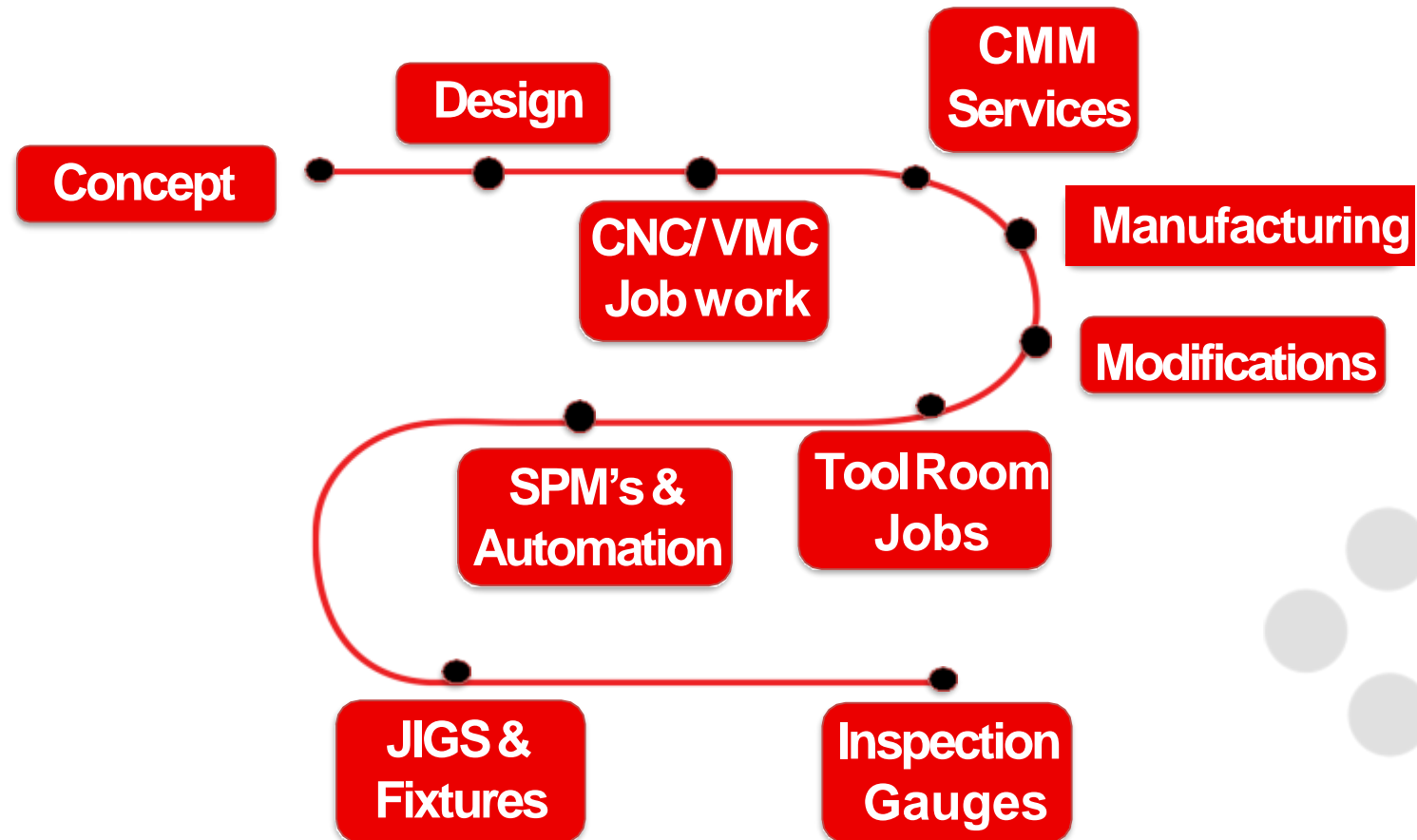


2009- ESCON Industries Established



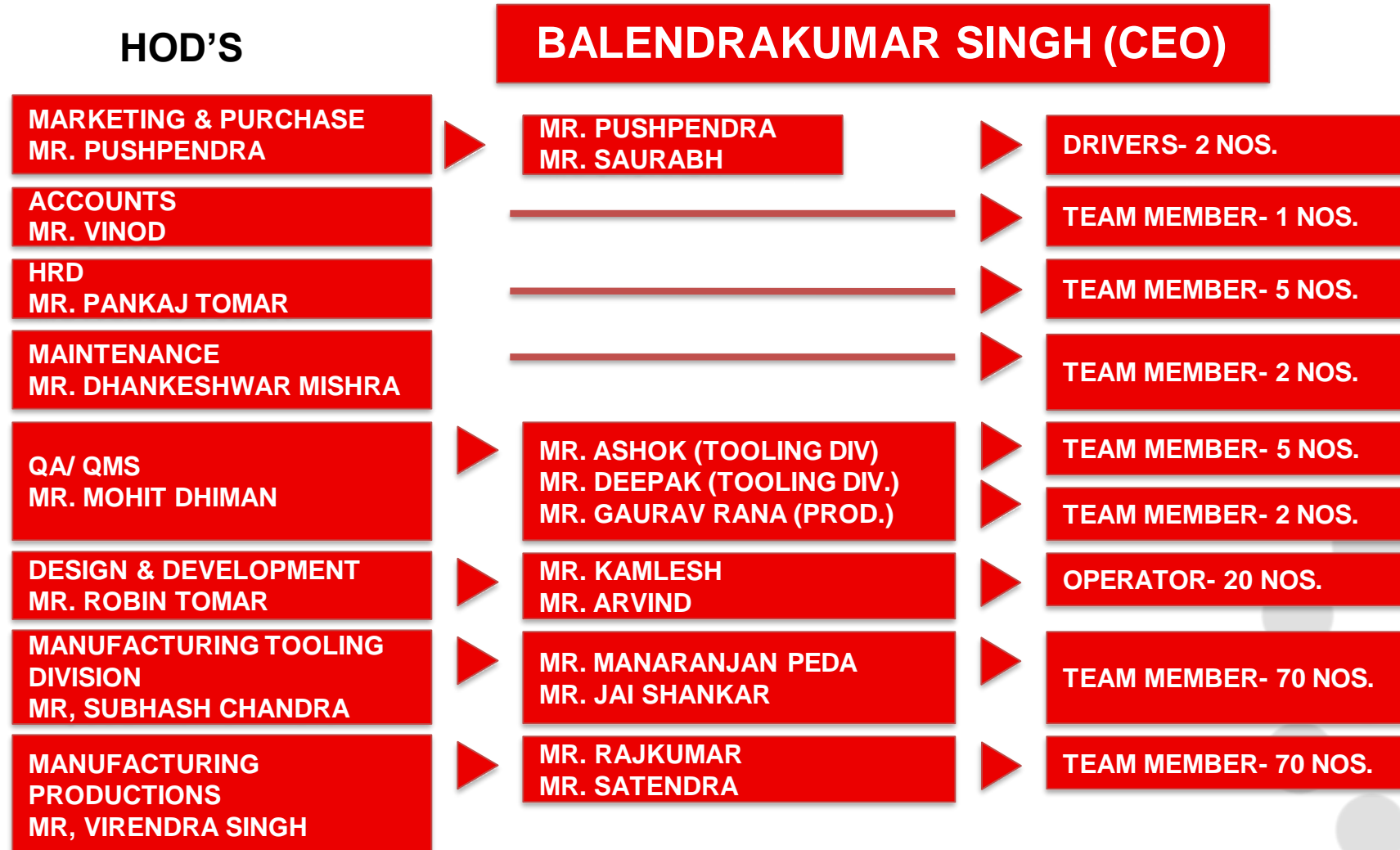


OUR SPECIALIZATIONS & SERVICES





Organization Structure





LICENSED DESIGN SOFTWARES

SOLID WORKS



SOLID CAM





LICENSED DESIGN SOFTWARES

AUTODESK POWER MILL





QUALITY ASSURANCE

HARDNESS TESTER



CMM



PROFILE PROJECTOR





QUALITY ASSURANCE

PROFILE PROJECTOR



HARDNESS TESTER





QUALITY ASSURANCE

PRE-DISPATCH INSPECTION



LASER MARKING FACILITIES

ROUGHNESS TESTER



PDI



LASER MARKING MACHINE





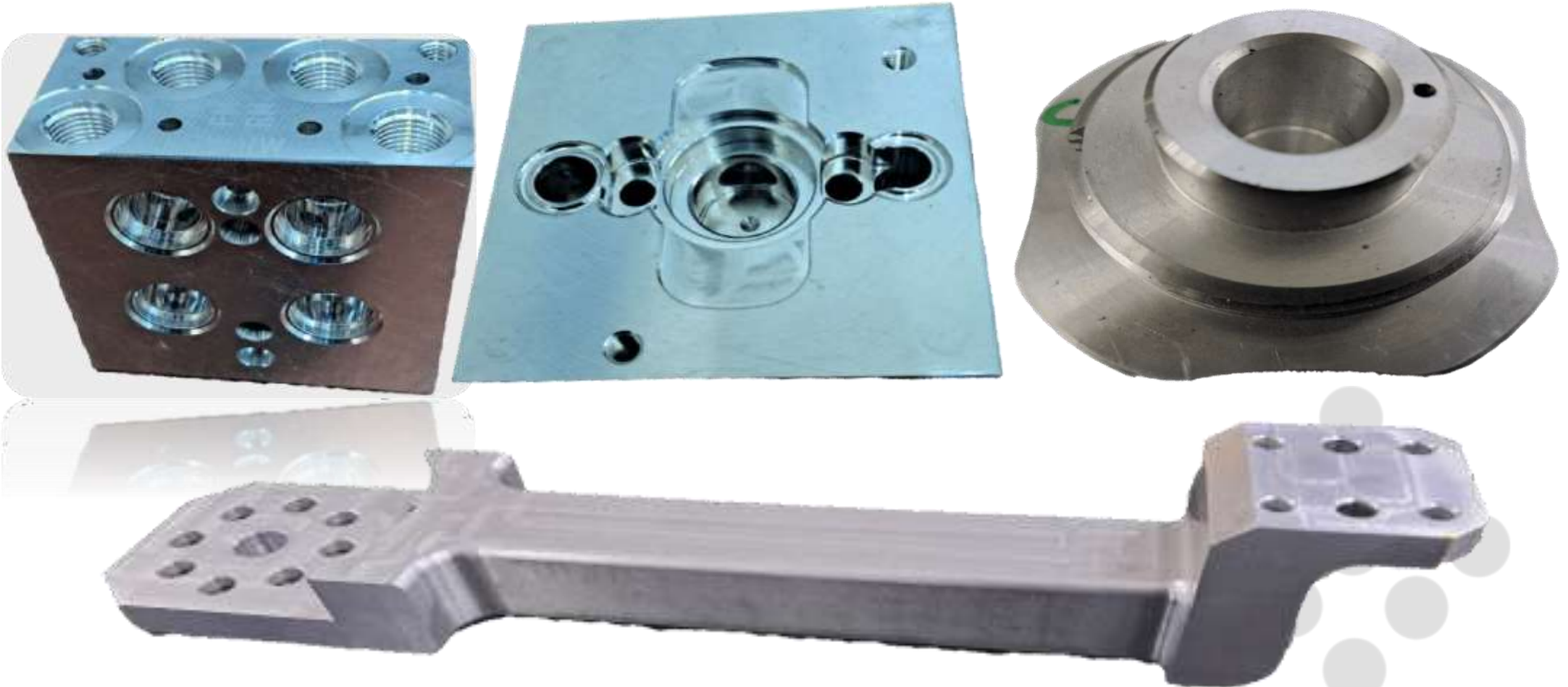
OUR PRODUCTS

Metallic & Non- Metallic





OUR PRODUCTS



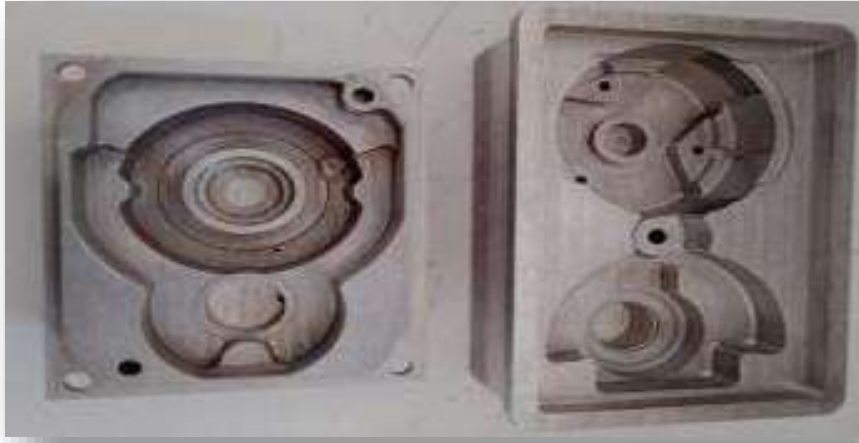


OUR PRODUCTS





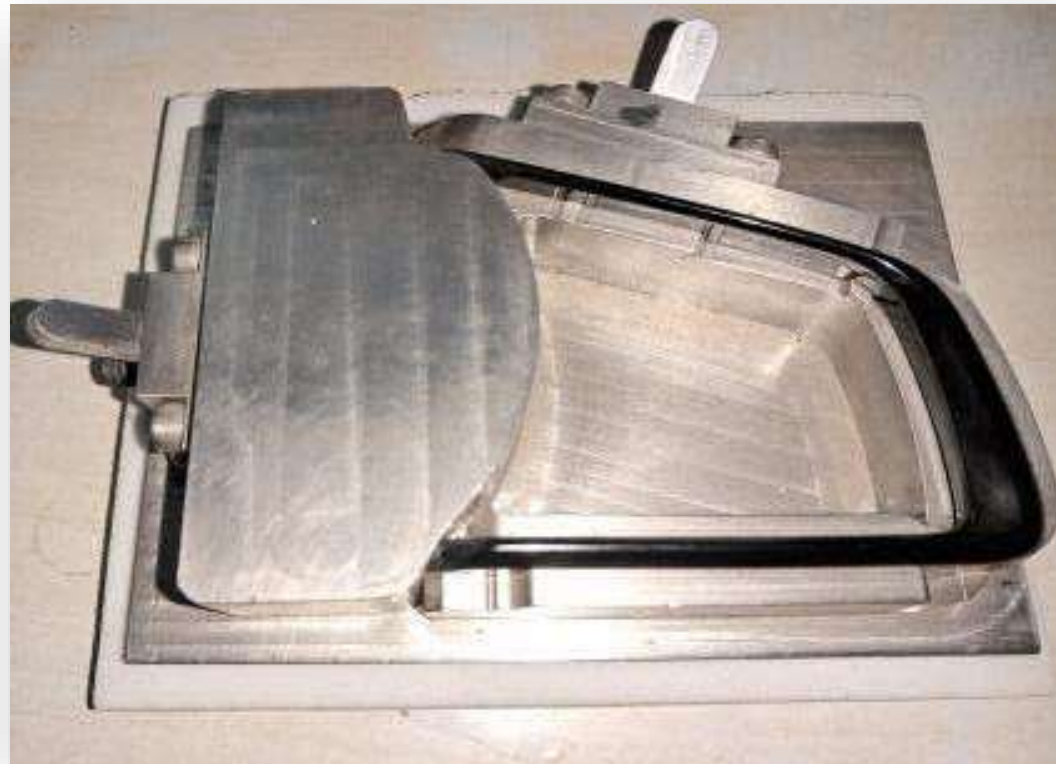
OUR PRODUCTS





OUR PRODUCTS

Stainless Steel Parts





OUR PRODUCTS

Derlin, Nylon & PVC parts



Forging Dies





OUR PRODUCTS

Brass, Bronze, Copper, Gun-metal parts





OUR PRODUCTS

Aluminum





OUR PRODUCTS

Forged, CNC Job work & with material





OUR PRODUCTS

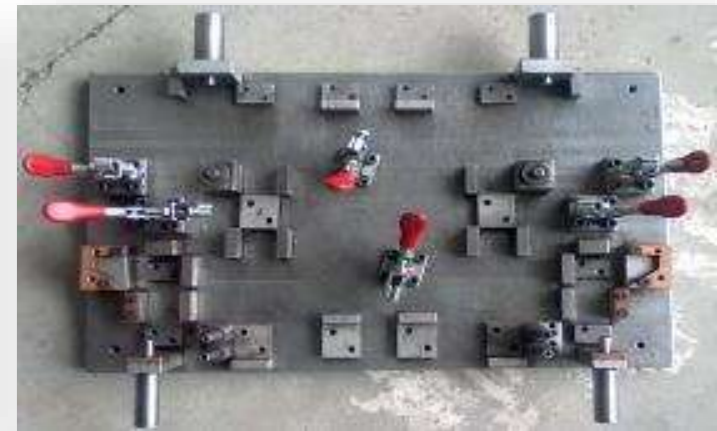
Inspection Gauges





OUR PRODUCTS

Hydraulic VMC Fixtures





LIST OF MACHINERIES

	VMC MACHINES						
S NO.	MACHINE MANUFACTURER	NO OF MACHINES	MACHINE MODEL	MACHINE STROKE/TRAVEL_IN_XYZ FORMAT	NUMBER OF AXIS	POSITIONAL ACCURACY(MICRONS)	MAX.RPM
1	HAAS	1	VF2	760X409X510	3	0.01	10000
2	HAAS	1	VF4	1270X508X621	3+1_4TH_AXIS	0.01	10000
3	HAAS	8	VF2	762X409X510	3	0.01	10000
4	HAAS	1	VF2	762X409X510	3+1_4TH_AXIS	0.01	10000
5	HAAS	1	VF2	762X409X510	5TH_AXIS_TRT210_ATTACHED	0.01	10000
6	HAAS	1	VF4	1270X508X621	3	0.01	10000
7	HAAS	1	VF2	762X409X510	3	0.01	12000
8	AMS	1	MCV400	630X416X480	3	0.05	8000
9	BFW	1	BMV45+	600X500X550	3	0.05	8000
10	MAZAK	1	VC-EZ-660IP	1270X610X635	3	0.005	12000



LIST OF MACHINERIES

	CNC MACHINES						
S NO.	MACHINE MANUFACTURER	NO. OF MACHINE	MACHINE MODEL	MACHINE STROKE/TRAVEL_IN_XZ FORMAT	POSITIONAL ACCURACY(MICRO NS)	MAX.RPM	
1	JOYTI	1	DX-200-5B	X320.0 / Z370.0	0.02	3500	
2	JOYTI	1	DX-200-5A	X320.0 / Z370.0	0.01	3500	
3	ACE	1	SUPPER JOBBER LM	X280.0/ Z300.0	0.01	4000	
4	ACE	2	J 300 LM	X200.0/ Z160.0	0.01	4000	
5	ACE	1	JOBBER JUNIOR	X200.0/ Z160.0	0.02	4000	
6	LMW	1	LX20T-L7	X360.0/ Z600.0	0.01	3500	
7	LMW	1	LL30T-L10	X405.0/ Z800.0	0.01	3000	



OUR FACILITIES

Description	Qty
Tool Room Machines	
M1 TR with DRO	08
Conventional lathes	04
Cylindrical Grinder	01
Surface Grinder	03
Drilling Machine	07
Magnet Drill Machine	01
Heavy Duty Drill Machine (Imported)	04
Computerized Laser Marking Machine	01
Automatic Tapping Machine	02
Arc Welding Machine	01
Mig Welding Machine	01
Assembly Tables	03
Bench Tool Grinder	03
Inspection Instruments	Set



OUR FACILITIES

Measuring Devices

Description	Qty
Quality	
CMM (Accurate Spectra)	01
Profile Projector	01
Hardness Tester	01
Roughness Tester	01
Surface Plate	04
Digital Height Gauge (Range 0 - 600MM)	Set
General Inspection Instruments	Set
Vernier Calipers (Range 0 - 600MM)	Set
Micrometers (Range 0 - 400MM)	Set
Bore Gauge (Range 0 - 250MM)	Set
Slip Gauge, Radius Gauge, Thread Gauge, etc.	Set



OUR FACILITIES

VMC 4 Axis Haas Make



**VMC Continuous 5 Axis
Haas Make**





OUR FACILITIES

VMC Machine Shop





OUR FACILITIES

CNC Machine Shop





OUR FACILITIES

Tool Room Machine Shop





OUR CERTIFICATIONS



UDYAM, 4/20 PM

Char. Udyam Registration Certificate

UDYAM REGISTRATION CERTIFICATE

UDYAM REGISTRATION NUMBER: UDYAM HR-05-0001716

NAME OF ENTERPRISE: ESCON INDUSTRIES

TYPE OF ENTERPRISE:

SNA	Classification Year	Enterprise Type	Classification Date
1	2023-24	Micro	01/04/2023
2	2024-25	Micro	27/04/2024
3	2023-24	Micro	09/05/2023
4	2022-23	Micro	06/04/2022

MAJOR ACTIVITY: MANUFACTURING

SOCIAL CATEGORY OF ENTREPRENEUR: GENERAL

NAME OF UNIT:

SNA	Name of Unit
1	ESCON INDUSTRIES

OFFICIAL ADDRESS OF ENTERPRISE:

Plot/Block/Shop No.	Phase No.	Name of Premises/Building	UDYAM (ENTERPRISE)
Tillage/ Town	UDYOG VIKAS	Block	PHASE-4
Road/Street/Lane	UDYOG VIKAS	730	GAURAHAM
Dist.	HARYANA	Meerut	GAURAHAM, Ph 02360
Mobile	980612000	Twitter	concoind@gmail.com

DATE OF INCORPORATION / REGISTRATION OF ENTERPRISE: 16-05-2008

DATE OF COMMENCEMENT OF PRODUCTION/BUSINESS: 16-05-2011

NATIONAL INDUSTRY CLASSIFICATION CODE(S):

Code	HS 1 Digit	HS 2 Digit	HS 3 Digit	Activity
1	85	Other manufacturing	8509	Manufacture of other articles of plastic

DATE OF UDYAM REGISTRATION: 26-09-2024

The issue of provisional registration/certificate of status of an enterprise, the form of the Government of India will be issued as per the provisions of Notification No. 10/13/2002 dated 26-09-2002 issued by the Ministry of MSME.

Disclaimer: This is computer generated document. An Applicant required: Printed form udyaamregistration.gov.in & Date of printing: 01/04/2023

http://udyaamregistration.gov.in/udyaam_registration_PDF/udyaam_registration



COMPANY DETAILS

CONTACT PERSON	MR. BALENDRA SINGH
CONTACT NO:	09810423585
TYPE OF FIRM:	PROPRIETORSHIP
BUILDING:	SELF
DG BACKUP:	YES
MAIL ID:	balendra@esconindustries.in
GSTIN NO:	06AIQPN9142A1Z8
SSI NO:	06-018-11-3208 Part II
PAN NO:	AIQPN91242A
SERVICE TAX NO:	AIQPN91242ASD001
MANPOWER ON ROLL:	100NOS.
TURN OVER LAST YEAR (2024-25):	21 CRORE



THANKS

FOR ALL YOUR VALUABLE TIME



+91-9319808254



escon.ind@gmail.com



www.esconindustries.in



357, Udyog Vihar, Phase VI,
Sector -37, Gurgaon- 122001